

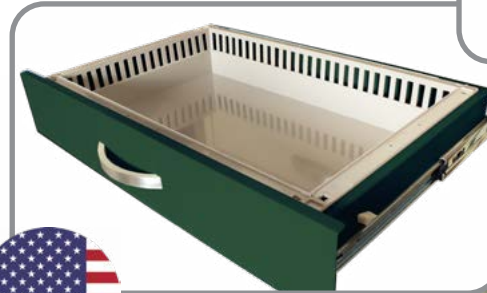


TPS3028EC4

T-SERIES CART 4 Drawers, E-lock



The look and function of traditional drawers with the adaptability of medical storage trays, each drawer features an outer frame that holds an easily removeable plastic tray



Engineered & Manufactured in the U.S.

Features:

- Non-standard drawers are designed to hold industry standard plastic trays such as those from H+H or Pegasus
- Sturdy, uni-body steel construction
- Basic electronic pushbutton lock w/key lock override
- Factory set user and supervisor code
- Cabinet may be programmed in the field
- Full extension drawers slides
- Body has pre-threaded accessory mounting holes
- Antimicrobial plastic top, removable
- Ergonomic side push handles, mounted on either side
- 28" of vertical drawer space
- Industry best 5" quiet rolling Tente® casters - one steering caster and two braking casters
- Fully customizable drawer configurations
- Durable scratch resistant heat sealed powder coat finish
- 12-Year Manufacturer's Warranty on shipments to US and Canada, 5-Year Manufacturer's Warranty on all other International shipments
- 1-Year Limited Warranty on any bought-out parts
- Your latex free cart is delivered assembled
- Industry only fully curved protective bumper



Color shown is Forest Green. More than 20 additional colors are available.

**Tall, Standard Width,
Four Drawer Cart with Keyless
Electronic Pushbutton Lock**

Drawer Configuration:

- 24.5" W x 17" D (62.2 x 43.2 cm)
- One 4" drawer (10.2 cm) and three 8" drawers (20.3 cm)

Assembled Cart Dimensions:

- 43.75" H x 36.75" W x 22" D (111.1 cm H x 93.3 cm W x 55.9 cm D)
- Cart weight: 150 lbs (68 kg)
- Approximate shipping weight: 175 lbs (79.4 kg)
- Approximate Shipping Dims: 56" H x 37" W x 26" D (142.2 cm x 94 cm x 66 cm)



View similar products online at
<https://www.harloff.com/product-category/m-series-medical-carts/>

**Toll Free: (800) 433-4064 • medicalsales@harloff.com
www.harloff.com • Ph: (719) 637-0300**