



BRONCHOSCOPE

SureDry SCOPE CABINETS

STAINLESS STEEL 16 BRONCHOSCOPE DRYING CABINET, KEY LOCK

Scopes
not included

SCSS8036DRDP-BRONCH8OV8

FEATURES

- Positive pressure fully redundant fan system
- Meets or exceeds Joint Commission, AORN, SGNA & AAMI guidelines
- Industries only unit with three intake and two exhaust fans
- Fan run time is fully adjustable and activated each time cabinet is closed
- HEPA filter removes 99.7% of particulates, .03 Microns
- Holds up to 16 bronchoscopes with a secure adjustable mounting system
- Industry first replaceable HEPA Filter system without removal of scopes
- Medical grade electrical system, tempered glass double doors & easy to clean removable drip tray
- Multiple locking options available including badge entry
- Scope cabinets are delivered fully assembled
- Harloff has Industry Best 12 year limited manufacturers warranty for Sales to US and Canada
- Overall cabinet dimensions: 93" H x 30" W x 24" D

COLORS

Available in more than twenty color options.
View them online: <https://www.harloff.com/finish-options/>



The Sure-Dry Scope Cabinet includes the industry best Positive Pressure HEPA Filtered Drying system. Inside air is replaced inside the cabinet 4 times per minute.

Simple "Plug and Play" upgradeable with Dri-Scope Aid®, industry leading internal lumen drying system



Engineered &
Manufactured
in the U.S.



View similar products online at
<https://www.harloff.com/suredry-scope-cabinets/>

Toll Free: (800) 433-4064 • medicalsales@harloff.com
www.harloff.com • Ph: (719) 637-0300

Optional dimmable LED
lighting also available!

Why is a positive pressure system important?

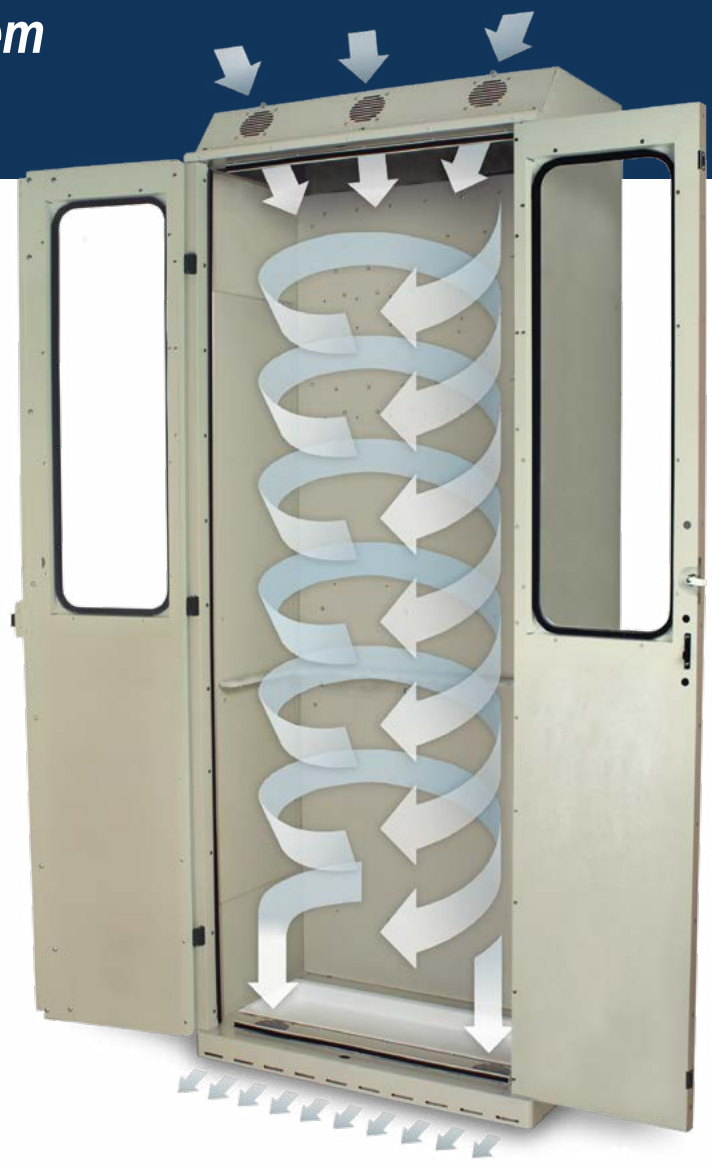
The unique design of the SureDry Scope Cabinet includes both top fans for intake and lower fans for exhaust. This push/pull design creates a vortex of air that flows through the cabinet ensuring maximum drying efficiency.

Intake:

Intake airflow comes through separate HEPA filters (which remove 99.7% of particulates, .03 Microns) driven by fully redundant fans producing a positive pressure vortex from the cabinet top. This creates an even circular motion of airflow over all scopes.

Exhaust:

The lower exhaust fans pull the circulated air out of the cabinet ensuring the flow of air is consistent from top to bottom, providing a complete drying system for the entire scope. This push/pull multiple fan system (an industry first) ensures a positive pressure system to meet all major guidelines and it ensures forced drying and equal drying levels across the full length of each and every scope.



SureDry Cabinets: A Smart Choice

to Meet and Exceed Current AORN, SGNA and AAMI Guidelines

Scope Storage Guidelines	Forced Air Drying	HEPA Filtered Air	Hang Scopes Vertically	Scopes Must Hang Freely, No Touching or Coiling	Easy to Clean and Disinfect	Closed Door Cabinet	Positive Air Pressure	Circulated Air Environment	Connectors — Use Disposables or Reusables Stored w/Scopes	Dry Scopes Completely	Uses Channel Drying (with Dri-Scope Aid®)
ANSI/AAMI ST91:2021	SureDry scope cabinets, with or without Dri-Scope Aid®, meet and exceed updated guidelines										
AORN	✓	✓	✓	✓	✓	✓	✓	✓	✓	✓	✓
SGNA	✓	✓	✓	✓	✓	no data	✓	no data	✓	✓	✓
AAMI	✓	✓	✓	✓	✓	✓	✓	✓	✓	✓	✓

10 Reasons to Choose **HARLOFF** for Your Scope Cabinets

A Smart Choice to Meet & Exceed Current SGNA, AORN and AAMI Guidelines



1

Industry Best Positive Pressure HEPA Filtered Drying System. Designed to add Dri-Scope Aid® now or later with easy “Plug & Play installation.

Proudly Made in the USA

6



Harloff products are proudly **Designed, Engineered and Manufactured in the United States** at our Colorado Springs, CO facility.

Dri-Scope Aid®

2

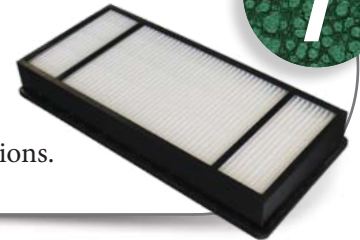
Fully Retrofittable in Field

All SureDry scope cabinets are fully designed to be field installed with the industry best Dri-Scope Aid® lumen drying system, which provides HEPA filtered air to each internal scope channel.

Easy Access to HEPA Filters

7

Change HEPA filters **without opening the cabinet.** Save time and ensure no cycle interruptions.



LED Lighting Option

3

Brighten your cabinet and easily inspect scopes with fully dimmable optional overhead LED lighting which triggers on door open/close.



Keyed or Keyless Locks

8

Options include key locks, basic electronic push button locks, advanced keypads and proximity readers. View locking options online at www.harloff.com/locking-options/



Hooks and Holders for Specialized Scopes

4

Major brands to include **Fuji, Olympus, Pentax, Karl Storz and others.**



Scope Cabinet Finish Options

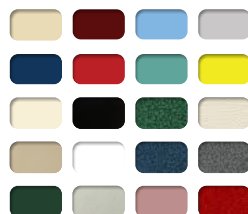
9

Choose Stainless Steel, Heat Sealed Powder Coat in High Gloss or Textured Low Gloss, or upgrade to an **antimicrobial finish.**

12 Year Warranty

5

Our Manufacturer's Warranty is Unmatched in the industry. We build our cabinets to last and we stand behind them.



Superior Color Choices

10

Over 20 Colors to choose from. Cabinets have a heat sealed powder coat finish inside and out. View color options online at www.harloff.com/finish-options/